

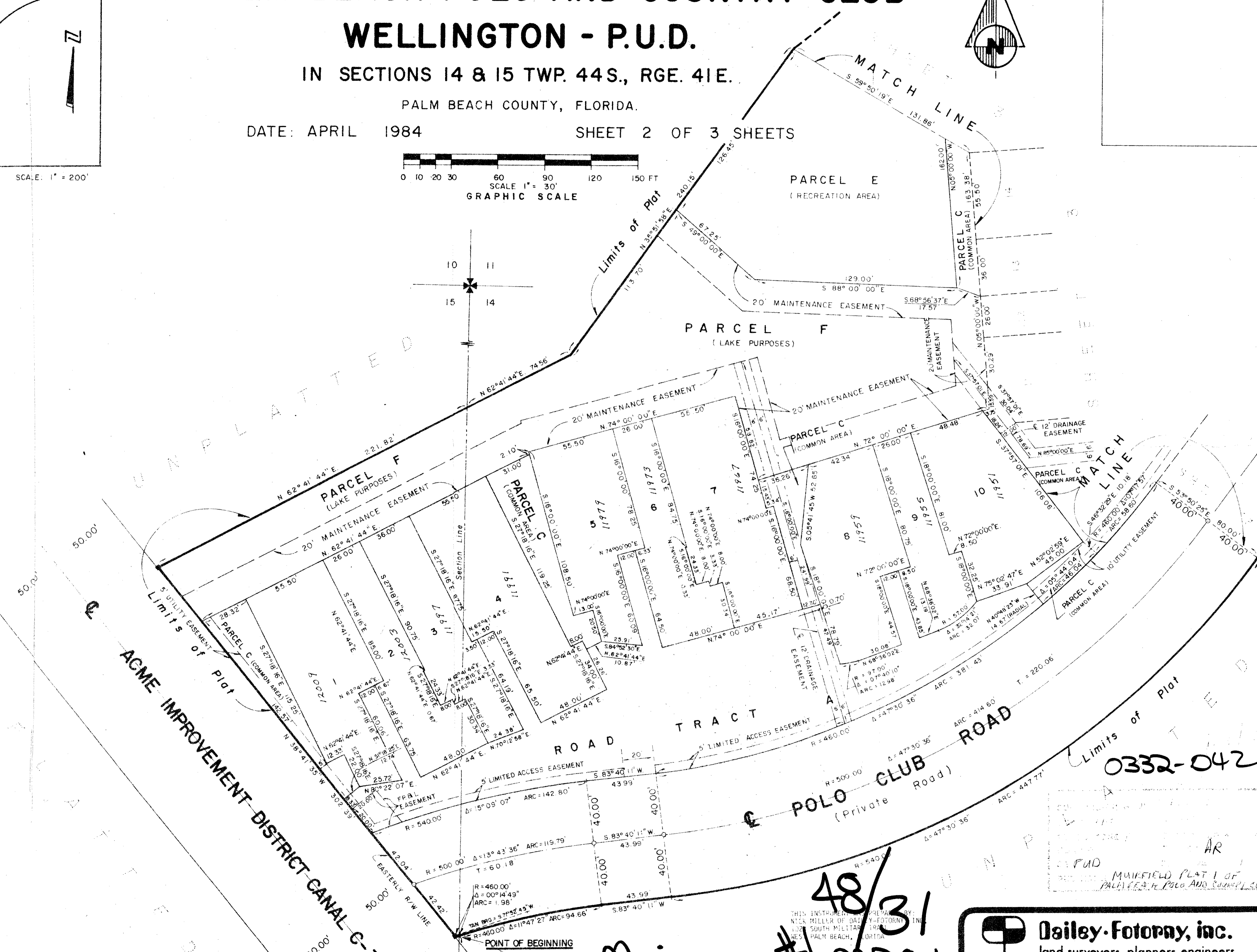
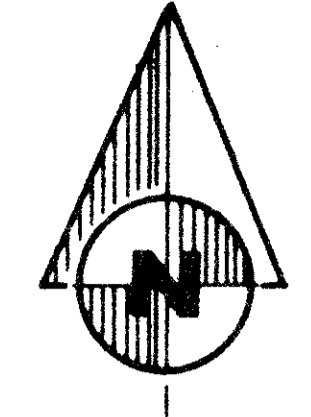
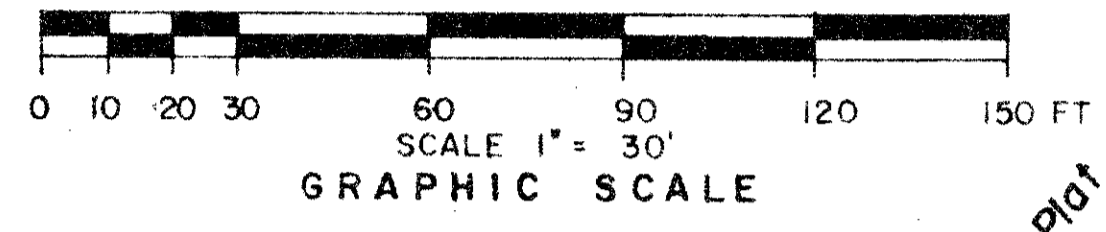
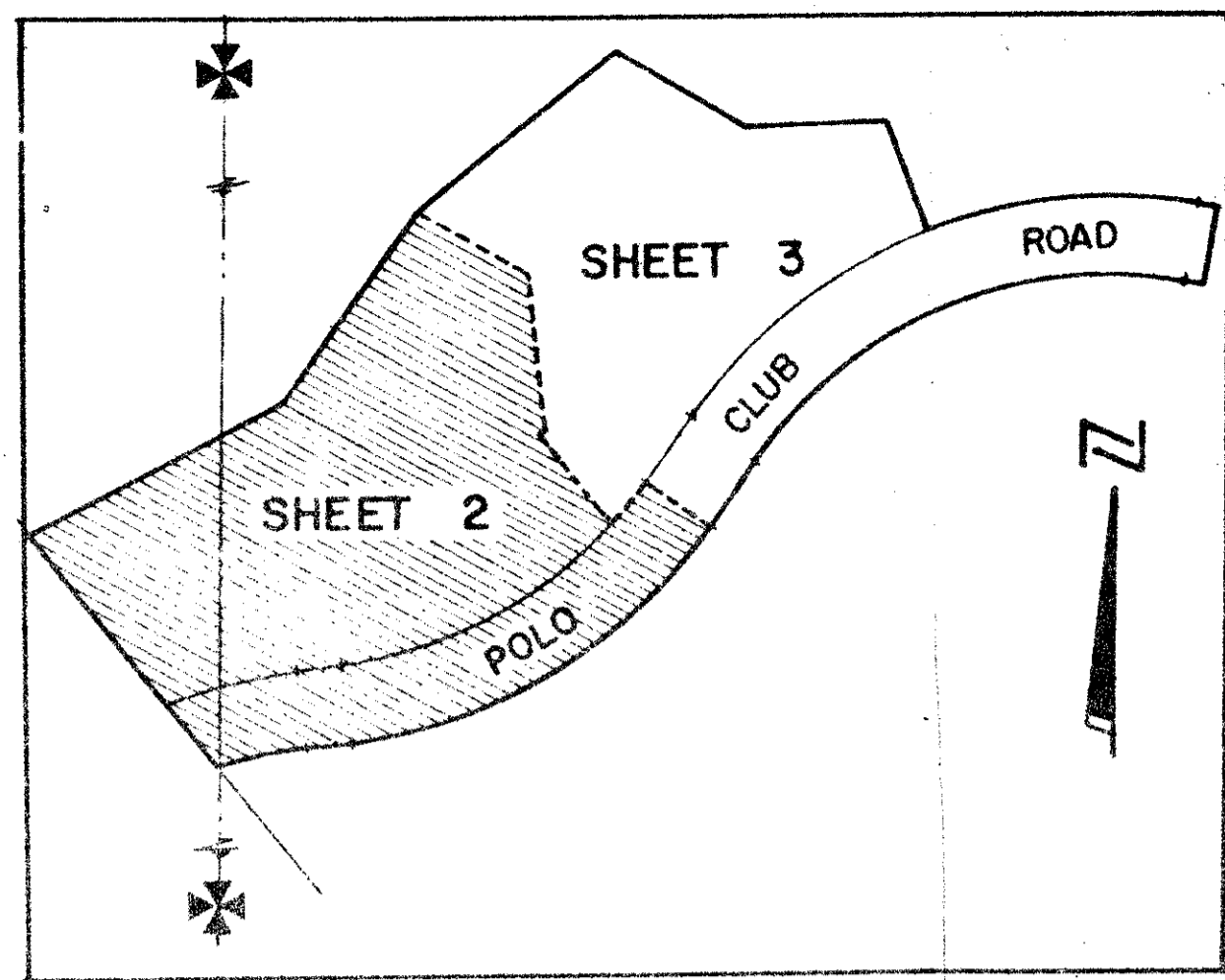
MUIRFIELD - PLAT NO. 1 OF PALM BEACH POLO AND COUNTRY CLUB WELLINGTON - P.U.D.

IN SECTIONS 14 & 15 TWP. 44S., RGE. 41E.

PALM BEACH COUNTY, FLORIDA.

DATE: APRIL 1984

SHEET 2 OF 3 SHEETS



NOTES

- ALL BEARINGS SHOWN HEREON ARE RELATIVE TO AN ASSUMED MERIDIAN USED THROUGHOUT WELLINGTON.
- BUILDING SETBACK LINES SHALL BE AS REQUIRED BY PALM BEACH COUNTY ZONING REGULATIONS.
- NO STRUCTURES, TREES OR SHRUBS SHALL BE PLACED ON DRAINAGE EASEMENTS.
- APPROVAL OF LANDSCAPING ON UTILITY EASEMENTS OTHER THAN WATER AND SEWER SHALL BE ONLY WITH THE APPROVAL OF ALL UTILITIES OCCUPYING SAME.
- WHERE DRAINAGE EASEMENTS AND UTILITY EASEMENTS CROSS, DRAINAGE EASEMENTS SHALL TAKE PRECEDENCE.
- DENOTES PERMANENT REFERENCE MONUMENT
- DENOTES PERMANENT CONTROL POINT
- EASEMENTS ARE FOR PUBLIC UTILITIES, UNLESS OTHERWISE NOTED.

0332-042

MUIRFIELD #1 PR.P.C.C.

Dailey-Fotorny, inc.
land surveyors, planners, engineers
1028 So Military Trail West Palm Beach, Florida 33406 Phone 305 945 8721

48/31

DRAWING NUMBER

DRAWING NUMBER

DRAWING NUMBER

PLAN HOLD CORPORATION • IRVINE, CALIFORNIA